



# Test Report



Report No.: PTC22110202201C-EN01

Issue Date: Dec. 30, 2022

Page1 of 20

**Applicant:** Wenzhou Huaqiao Packing Machine Factory

**Address:** No. 15 Gangfu Road, Konggang New Area, Wenzhou, Zhejiang, China

The following merchandise was (were) submitted and identified by client as:

**Sample Name:** Vacuum Packing Machine  
Main test model:DZ-260/PD  
Series model:DZ-300/PD, DZ-400/ZT, DZ-450/ZT, DZ-500/ZT, DZ-400/2E, DZ-450/2E, DZ-500/2E, DZ-600/2E, DZ-400/2D, DZ-450/2D, DZ-500/2D, DZ-600/2D, DZ-800/2L, DZ-900/2L, DZ-1000/2L., DZ-1100/2L, DZ-400/2SB, DZ-500/2SB, DZ-600/2SB, DZ-700/2SB, DZ-800/2SB, DZ-400/2SA, DZ-500/2SA, DZ-600/2SA, DZ-700/2SA, DZ-800/2SA, DZ-650/4SB, DZW-600/4SB, DZA-600/2SB

**Model:**

**Manufacturer:** Wenzhou Huaqiao Packing Machine Factory

**Address:** No. 15 Gangfu Road, Konggang New Area, Wenzhou, Zhejiang, China

**Sample Received Date:** Nov. 03, 2022 & Nov. 30, 2022 & Dec. 21, 2022

**Completed Date:** Dec. 30, 2022

**Test Requested:** As specified by client, with reference to RoHS Directive 2011/65/EU and its subsequent amendments regulation EU No.2015/863.(Lead (Pb), Cadmium(Cd), Mercury(Hg), Hexavalent Chromium(Cr<sup>6+</sup>), PBBs and PBDEs, Phthalates (DBP, BBP,DEHP,DIBP))

**Conclusion(s):** According to the test results of below test parameters, Tested materials of submitted samples complied with the requirements for RoHS Directive 2011/65/EU and its subsequent amendments regulation EU No.2015/863.

**Test Result(s) and Test Method(s):**Please refer to next page(s).



Prepared by: Anne

Checked by:May Chan

Approved by: Miya

Anne

May Chan

Miya

This report is issued according to the general clauses in [www.ptc-testing.com](http://www.ptc-testing.com) by PTC. Responsibility, guarantee and law restriction are defined in the general service clauses. The report is only responsible for the submitted sample(s) except as otherwise noted. The report could not be copied without permission of the company.

**Precise Testing & Certification (Guangdong) Co., Ltd. (PTC)**

Building 1, No. 6, Tongxin Road, Dongcheng Street, Dongguan, Guangdong, China  
Tel: 86-769-38808222 Fax: 86-769-38826111 [http:// www.ptc-testing.com](http://www.ptc-testing.com)



# Test Report

Report No.: PTC22110202201C-EN01

Issue Date: Dec. 30, 2022

Page2 of 20

**Test Result(s):**

**1.1) RoHS Directive 2011/65/EU -(Lead (Pb)/Cadmium(Cd)/Mercury(Hg)/Hexavalent Chromium(Cr<sup>6+</sup>)/PBBs/PBDEs)**

Test Method: IEC62321-3-1: 2013, IEC62321-5: 2013, IEC62321-6:2015,IEC62321-4:2013+AMD1:2017, IEC 62321-7-1:2015, IEC 62321-7-2: 2017, analyzed by EDXRF & AAS & ICP-OES & GC-MS & UV-Vis.

No.	Materials Description	EDXRF Result(s) (mg/kg)					Chemical Result (mg/kg)	Conclusion
		Pb	Cd	Hg	Cr	Br		
1	Transparent plastic (lid)	BL	BL	BL	BL	BL	--	PASS
2	Translucent silicone (sealing ring)	BL	BL	BL	BL	BL	--	PASS
3	Off-white silicone (cushion)	BL	BL	BL	BL	BL	--	PASS
4	Silver metal (cushion fixture)	BL	BL	BL	BL	--	--	PASS
5	Silver metal (shell)	BL	BL	BL	BL	--	--	PASS
6	Black plastic (shell)	BL	BL	BL	BL	BL	--	PASS
7	Silver metal with off-white coating (base)	BL	BL	BL	BL	--	--	PASS
8	Black rubber (cushion)	BL	BL	BL	BL	BL	--	PASS
9	Transparent plastic with multi-color printing with viscose (logo)	BL	BL	BL	BL	BL	--	PASS
10	Silver metal with black coating (vacuum gauge shell)	BL	BL	BL	BL	--	--	PASS
11	Transparent plastic (vacuum gauge shell)	BL	BL	BL	BL	BL	--	PASS
12	Red plastic (rotary switch)	BL	BL	BL	BL	BL	--	PASS
13	Beige plastic (rotary switch)	BL	BL	BL	BL	BL	--	PASS
14 <sup>E</sup>	Copper metal (nut)	IN	BL	BL	BL	--	Pb: 39220	PASS
15	Transparent plastic with blue printing(hose)	BL	BL	BL	BL	BL	--	PASS
16	Transparent plastic with red printing(hose)	BL	BL	BL	BL	BL	--	PASS
17	Silver metal (wire, hose inside)	BL	BL	BL	IN	--	Cr <sup>6+</sup> : Negative	PASS
18	Black plastic (plug)	BL	BL	BL	BL	BL	--	PASS
19	Silver metal (clamp)	BL	BL	BL	IN	--	Cr <sup>6+</sup> : Negative	PASS
20	Blue PCB(PCB "SH43644" )	BL	BL	BL	BL	IN	PBBs: N.D. PBDEs: N.D.	PASS
21	Silver metal (screw)	BL	BL	BL	BL	--	--	PASS

This report is issued according to the general clauses in [www.ptc-testing.com](http://www.ptc-testing.com) by PTC. Responsibility, guarantee and law restriction are defined in the general service clauses. The report is only responsible for the submitted sample(s) except as otherwise noted. The report could not be copied without permission of the company.

**Precise Testing & Certification (Guangdong) Co., Ltd. (PTC)**

Building 1, No. 6, Tongxin Road, Dongcheng Street, Dongguan, Guangdong, China  
 Tel: 86-769-38808222 Fax: 86-769-38826111 [http:// www.ptc-testing.com](http://www.ptc-testing.com)



# Test Report

Report No.: PTC22110202201C-EN01

Issue Date: Dec. 30, 2022

Page3 of 20

No.	Materials Description	EDXRF Result(s) (mg/kg)					Chemical Result (mg/kg)	Conclusion
		Pb	Cd	Hg	Cr	Br		
22	Red plastic (wire jacket,PCB "SH43644" )	BL	BL	BL	BL	BL	--	PASS
23	Transparent plastic (casing,PCB "SH43644" )	BL	BL	BL	BL	BL	--	PASS
24	Copper metal (wire,PCB "SH43644" )	BL	BL	BL	BL	--	--	PASS
25	Silver metal (wire clip,PCB "SH43644" )	BL	BL	BL	BL	--	--	PASS
26	White plastic (terminal,PCB "SH43644" )	BL	BL	BL	BL	BL	--	PASS
27	Black body (integrated circuit,PCB "SH43644" )	BL	BL	BL	BL	BL	--	PASS
28	Silver metal (integrated circuit pin,PCB "SH43644" )	BL	BL	BL	BL	--	--	PASS
29	Black body (triode,PCB "SH43644")	BL	BL	BL	BL	BL	--	PASS
30	Black body (diode,PCB "SH43644")	BL	BL	BL	BL	BL	--	PASS
31	Black body with white printing (resistor,PCB "SH43644" )	BL	BL	BL	BL	BL	--	PASS
32	Brown body (capacitor,PCB "SH43644" )	BL	BL	BL	BL	BL	--	PASS
33	Black body (relay,PCB "SH43644" )	BL	BL	BL	BL	BL	--	PASS
34	Silver metal (relay insert,PCB "SH43644" )	BL	BL	BL	BL	--	--	PASS
35	Dark gray body (inductor,PCB "SH43644" )	BL	BL	BL	BL	BL	--	PASS
36	White body (LED,PCB "SH43644" )	BL	BL	BL	BL	BL	--	PASS
37	Silver metal with black printing (capacitor shell,PCB "SH43644" )	BL	BL	BL	BL	--	--	PASS
38	Black rubber (capacitor,PCB "SH43644" )	BL	BL	BL	BL	BL	--	PASS
39	Brown paper with liquid (film inside the capacitor,PCB "SH43644" )	BL	BL	BL	BL	BL	--	PASS
40	Black plastic (switch button,PCB	BL	BL	BL	BL	BL	--	PASS

This report is issued according to the general clauses in [www.ptc-testing.com](http://www.ptc-testing.com) by PTC. Responsibility, guarantee and law restriction are defined in the general service clauses. The report is only responsible for the submitted sample(s) except as otherwise noted. The report could not be copied without permission of the company.

**Precise Testing & Certification (Guangdong) Co., Ltd. (PTC)**

Building 1, No. 6, Tongxin Road, Dongcheng Street, Dongguan, Guangdong, China  
 Tel: 86-769-38808222 Fax: 86-769-38826111 [http:// www.ptc-testing.com](http://www.ptc-testing.com)



# Test Report

Report No.: PTC22110202201C-EN01

Issue Date: Dec. 30, 2022

Page4 of 20

No.	Materials Description	EDXRF Result(s) (mg/kg)					Chemical Result (mg/kg)	Conclusion
		Pb	Cd	Hg	Cr	Br		
	“SH43644” )							
41	Silver metal (switch shell,PCB “SH43644” )	BL	BL	BL	BL	--	--	PASS
42	Silver metal (switch shrapnel,PCB “SH43644” )	BL	BL	BL	BL	--	--	PASS
43	Black plastic (switch base,PCB “SH43644” )	BL	BL	BL	BL	BL	--	PASS
44	Red plastic (LED,PCB “SH43644” )	BL	BL	BL	BL	BL	--	PASS
45	Green plastic (LED,PCB “SH43644” )	BL	BL	BL	BL	BL	--	PASS
46	White plastic with black coating (display,PCB “SH43644” )	BL	BL	BL	BL	BL	--	PASS
47	White plastic (wire jacket)	BL	BL	BL	BL	BL	--	PASS
48	Blue plastic (wire jacket)	BL	BL	BL	BL	BL	--	PASS
49	Green plastic (wire jacket)	BL	BL	BL	BL	BL	--	PASS
50	Yellow plastic (wire jacket)	BL	BL	BL	BL	BL	--	PASS
51	Red plastic (wire jacket)	BL	BL	BL	BL	BL	--	PASS
52	Bright silver metal (wire clip, U shape)	BL	BL	BL	BL	--	--	PASS
53	Blue plastic (casing)	BL	BL	BL	BL	BL	--	PASS
54	Transparent soft plastic (casing)	BL	BL	BL	BL	BL	--	PASS
55	Transparent plastic (wire jacket)	BL	BL	BL	BL	BL	--	PASS
56	Copper metal (wire clamp)	BL	BL	BL	BL	--	--	PASS
57	Silver metal (screw, long)	BL	BL	BL	IN	--	Cr <sup>6+</sup> : Negative	PASS
58	Off-white plastic (gasket)	BL	BL	BL	BL	BL	--	PASS
59	Bright silver metal (transformer bracket)	BL	BL	BL	BL	BL	--	PASS
60	Dark orange plastic (long sheet, transformer)	BL	BL	BL	BL	BL	--	PASS
61	Bright orange plastic with black printing (transformer bracket)	BL	BL	BL	BL	BL	--	PASS
62	Transparent plastic (bracket cover)	BL	BL	BL	BL	BL	--	PASS
63	Silver metal (square, transformer)	BL	BL	BL	BL	--	--	PASS

This report is issued according to the general clauses in [www.ptc-testing.com](http://www.ptc-testing.com) by PTC. Responsibility, guarantee and law restriction are defined in the general service clauses. The report is only responsible for the submitted sample(s) except as otherwise noted. The report could not be copied without permission of the company.

**Precise Testing & Certification (Guangdong) Co., Ltd. (PTC)**

Building 1, No. 6, Tongxin Road, Dongcheng Street, Dongguan, Guangdong, China

Tel: 86-769-38808222

Fax: 86-769-38826111

[http:// www.ptc-testing.com](http://www.ptc-testing.com)



# Test Report

Report No.: PTC22110202201C-EN01

Issue Date: Dec. 30, 2022

Page5 of 20

No.	Materials Description	EDXRF Result(s) (mg/kg)					Chemical Result (mg/kg)	Conclusion
		Pb	Cd	Hg	Cr	Br		
	body)							
64	Silver solder (fixture)	BL	BL	BL	BL	--	--	PASS
65	Black plastic (coil fixture)	BL	BL	BL	BL	BL	--	PASS
66	Transparent plastic (coil protective film)	BL	BL	BL	BL	BL	--	PASS
67	Yellow plastic with viscose (insulation tape)	BL	BL	BL	BL	BL	--	PASS
68	Red-brown metal (transformer coil)	BL	BL	BL	BL	BL	--	PASS
69	Black plastic (AC contactor body)	BL	BL	BL	BL	IN	PBBs: N.D. PBDEs: N.D.	PASS
70	Blue plastic (coil fixture)	BL	BL	BL	BL	IN	PBBs: N.D. PBDEs: N.D.	PASS
71	Light grey plastic with black printing (screw attachment)	BL	BL	BL	BL	IN	PBBs: N.D. PBDEs: N.D.	PASS
72	Dark silver metal (core, E type)	BL	BL	BL	IN	--	Cr <sup>6+</sup> : Negative	PASS
73	Silver metal (large spring)	BL	BL	BL	IN	--	Cr <sup>6+</sup> : Negative	PASS
74	White plastic (gasket)	BL	BL	BL	BL	BL	--	PASS
75	White plastic with black/red printing (circuit breaker body)	BL	BL	BL	BL	BL	--	PASS
76	Blue plastic with white printing (handle switch)	BL	BL	BL	BL	BL	--	PASS
77	Purple plastic (wire jacket)	BL	BL	BL	BL	BL	--	PASS
78	Yellow/green plastic (wire jacket)	BL	BL	BL	BL	BL	--	PASS
79	Black plastic (port)	BL	BL	BL	BL	BL	--	PASS
80	Silver metal (insert, port)	BL	BL	BL	BL	--	--	PASS
81	Silver metal (port fixture)	BL	BL	BL	BL	--	--	PASS
82	Silver metal (gasket)	BL	BL	BL	BL	--	--	PASS
83	Blue plastic (oil can lid)	BL	BL	BL	BL	BL	--	PASS
84	Silver metal (oil filter)	BL	BL	BL	BL	--	--	PASS
85	Black rubber (sealing ring)	BL	BL	BL	BL	BL	--	PASS
86	Black plastic (cable jacket)	BL	BL	BL	BL	BL	--	PASS
87	Brown plastic (wire jacket)	BL	BL	BL	BL	BL	--	PASS
88	Black plastic (wire jacket)	BL	BL	BL	BL	BL	--	PASS

This report is issued according to the general clauses in [www.ptc-testing.com](http://www.ptc-testing.com) by PTC. Responsibility, guarantee and law restriction are defined in the general service clauses. The report is only responsible for the submitted sample(s) except as otherwise noted. The report could not be copied without permission of the company.

**Precise Testing & Certification (Guangdong) Co., Ltd. (PTC)**

Building 1, No. 6, Tongxin Road, Dongcheng Street, Dongguan, Guangdong, China

Tel: 86-769-38808222

Fax: 86-769-38826111

[http:// www.ptc-testing.com](http://www.ptc-testing.com)



# Test Report

Report No.: PTC22110202201C-EN01

Issue Date: Dec. 30, 2022

Page6 of 20

No.	Materials Description	EDXRF Result(s) (mg/kg)					Chemical Result (mg/kg)	Conclusion
		Pb	Cd	Hg	Cr	Br		
89	Silver metal (vacuum pump shell)	BL	BL	BL	BL	--	--	PASS
90	Silver metal with silver white coating (vacuum pump shell, grid)	BL	BL	BL	BL	--	--	PASS
91	Black plastic (cable jacket, data cable)	BL	BL	BL	BL	BL	--	PASS
92	Black plastic (three-hole plug, data cable)	BL	BL	BL	BL	BL	--	PASS
93	White plastic (inside plug, data cable)	BL	BL	BL	BL	BL	--	PASS
94	Copper colored metal (copper core, data wire)	BL	BL	BL	BL	--	--	PASS
95	Blue plastic (wire jacket, data cable)	BL	BL	BL	BL	BL	--	PASS
96	Yellow/green plastic (wire jacket, data cable)	BL	BL	BL	BL	BL	--	PASS
97	Brown plastic (wire jacket, data cable)	BL	BL	BL	BL	BL	--	PASS
98	Black plastic (pin shell, data cable)	BL	BL	BL	BL	BL	--	PASS
99	Silver metal (pin, data wire)	BL	BL	BL	BL	--	--	PASS
100	Silver metal (socket, data cable)	BL	BL	BL	BL	--	--	PASS

This report is issued according to the general clauses in [www.ptc-testing.com](http://www.ptc-testing.com) by PTC. Responsibility, guarantee and law restriction are defined in the general service clauses. The report is only responsible for the submitted sample(s) except as otherwise noted.  
The report could not be copied without permission of the company.

**Precise Testing & Certification (Guangdong) Co., Ltd. (PTC)**

Building 1, No. 6, Tongxin Road, Dongcheng Street, Dongguan, Guangdong, China

Tel: 86-769-38808222

Fax: 86-769-38826111

[http:// www.ptc-testing.com](http://www.ptc-testing.com)



# Test Report

Report No.: PTC22110202201C-EN01

Issue Date: Dec. 30, 2022

Page7 of 20

- Note:**
1. mg/kg = milligram per kilogram (ppm).
  2. N.D. = Not Detected
  3. Negative = Absence of Cr<sup>6+</sup>.
  4. Positive = Presence of Cr<sup>6+</sup>: the detected concentration in boiling-water-extraction solution is equal or greater than 0.02 mg/kg with 50 cm<sup>2</sup> sample surface area.
  5. The result are obtained by EDXRF for primary screening, if the result exceeds the below limit (BL), and further chemical testing.
  6. For EDXRF screening, the result(s) of Cr VI was (were) reported as total chromium and the result(s) of PBBs and PBDEs was (were) reported as total bromine.
  7. "E"= This material is tin-lead solder or metal alloy proved by client,lead in tin-lead solder or copper alloy is exempted on the requirements of RoHS directive (EU Directive 2011/65/EU).

## Screening limits in mg/kg for regulated elements in various matrices

Elements	Polymer	Metal	Composite Materials
Pb	BL≤(700-3σ)<X<(1300+3σ)≤ OL	BL≤(700-3σ)<X<(1300+3σ)≤ OL	BL≤(500-3σ)<X<(1500+3σ)≤ OL
Cd	BL≤(70-3σ)<X<(130+3σ)≤ OL	BL≤(70-3σ)<X<(130+3σ)≤ OL	LOD<X<(150+3σ)≤OL
Hg	BL≤(700-3σ)<X<(1300+3σ)≤ OL	BL≤(700-3σ)<X<(1300+3σ)≤ OL	BL≤(500-3σ)<X<(1500+3σ)≤ OL
Cr	BL≤(700-3σ)<X	BL≤(700-3σ)<X	BL≤(500-3σ)<X
Br	BL≤(300-3σ)<X	--	BL≤(250-3σ)<X

BL = Below Limit, OL = Over Limit, IN = Inconclusive, LOD = Limit of Detection

This report is issued according to the general clauses in [www.ptc-testing.com](http://www.ptc-testing.com) by PTC. Responsibility, guarantee and law restriction are defined in the general service clauses. The report is only responsible for the submitted sample(s) except as otherwise noted.  
The report could not be copied without permission of the company.

**Precise Testing & Certification (Guangdong) Co., Ltd. (PTC)**

Building 1, No. 6, Tongxin Road, Dongcheng Street, Dongguan, Guangdong, China  
Tel: 86-769-38808222 Fax: 86-769-38826111 [http:// www.ptc-testing.com](http://www.ptc-testing.com)



# Test Report

Report No.: PTC22110202201C-EN01

Issue Date: Dec. 30, 2022

Page8 of 20

## Chemical Testing - Detection Limit & 2011/65/EU Limit:

Name of Chemicals	Detection Limit (mg/kg)	2011/65/EU Limit (mg/kg)
Lead (Pb)	5	1000
Cadmium (Cd)	5	100
Mercury (Hg)	5	1000
Chromium VI (Cr VI)	Non-metal: 10 Metal: Negative	Non-metal: 1000 Metal: Negative
Polybromobiphenyls (PBBs) -Bromobiphenyl (MonoBB) -Dibromobiphenyl (DiBB) -Tribromobiphenyl (TriBB) -Tetrabromobiphenyl (TetraBB) -Pentabromobiphenyl (PentaBB) -Hexabromobiphenyl (HexaBB) -Heptabromobiphenyl (HeptaBB) -Octabromobiphenyl (OctaBB) -Nonabromobiphenyl (NonaBB) -Decabromobiphenyl (DecaBB)	Each 5	Sum: 1 000
Polybromodiphenyl ethers (PBDEs) -Bromodiphenyl ether (MonoBDE) -Dibromodiphenyl ether (DiBDE) -Tribromodiphenyl ether (TriBDE) -Tetrabromodiphenyl ether (TetraBDE) -Pentabromodiphenyl ether (PentaBDE) -Hexabromodiphenyl ether (HexaBDE) -Heptabromodiphenyl ether (HeptaBDE) -Octabromodiphenyl ether (OctaBDE) -Nonabromodiphenyl ether (NonaBDE) -Decabromodiphenyl ether (DecaBDE)	Each 5	Sum: 1 000

This report is issued according to the general clauses in [www.ptc-testing.com](http://www.ptc-testing.com) by PTC. Responsibility, guarantee and law restriction are defined in the general service clauses. The report is only responsible for the submitted sample(s) except as otherwise noted. The report could not be copied without permission of the company.

**Precise Testing & Certification (Guangdong) Co., Ltd. (PTC)**

Building 1, No. 6, Tongxin Road, Dongcheng Street, Dongguan, Guangdong, China

Tel: 86-769-38808222

Fax: 86-769-38826111

[http:// www.ptc-testing.com](http://www.ptc-testing.com)





# Test Report

Report No.: PTC22110202201C-EN01

Issue Date: Dec. 30, 2022

Page9 of 20

**Test Result(s):**

**1.2) RoHS Directive 2011/65/EU and its subsequent amendments regulation EU No.2015/863 - (Phthalates DIBP,DBP, BBP, DEHP)**

Method: IEC 62321-8: 2017, analyzed by Gas Chromatograph-Mass Spectrometry (GC-MS).

Substances	DBP	BBP	DEHP	DIBP	Conclusion
CAS No.	84-74-2	85-68-7	117-81-7	84-69-5	
Limit(s) (mg/kg)	1000	1000	1000	1000	
RL (mg/kg)	50	50	50	50	
Material No.	Result (mg/kg)				
1+2+3	N.D.	N.D.	N.D.	N.D.	PASS
6	67	N.D.	N.D.	N.D.	PASS
8+15+16	N.D.	N.D.	N.D.	N.D.	PASS
9	93	N.D.	N.D.	N.D.	PASS
11+12+13	N.D.	N.D.	N.D.	N.D.	PASS
18	100	N.D.	N.D.	N.D.	PASS
20	95	N.D.	N.D.	N.D.	PASS
22+23+47	N.D.	N.D.	N.D.	N.D.	PASS
26+38+39	N.D.	N.D.	N.D.	N.D.	PASS
27+29+30	N.D.	N.D.	N.D.	N.D.	PASS
31+32+33	N.D.	N.D.	N.D.	N.D.	PASS
35+36	N.D.	N.D.	N.D.	N.D.	PASS
40+43+44	N.D.	N.D.	N.D.	N.D.	PASS
45	114	N.D.	N.D.	N.D.	PASS
46	122	N.D.	N.D.	N.D.	PASS
48+49+50	169	N.D.	N.D.	N.D.	PASS
51	135	N.D.	N.D.	N.D.	PASS
54	N.D.	N.D.	N.D.	PASS	PASS
55	800	N.D.	N.D.	N.D.	PASS
58	64	N.D.	N.D.	N.D.	PASS
60	70	N.D.	N.D.	N.D.	PASS
61+62+65	N.D.	N.D.	75	N.D.	PASS
66+67+69	N.D.	N.D.	N.D.	PASS	PASS
70+71+74	105	N.D.	N.D.	N.D.	PASS
75	71	N.D.	N.D.	N.D.	PASS

This report is issued according to the general clauses in [www.ptc-testing.com](http://www.ptc-testing.com) by PTC. Responsibility, guarantee and law restriction are defined in the general service clauses. The report is only responsible for the submitted sample(s) except as otherwise noted. The report could not be copied without permission of the company.

**Precise Testing & Certification (Guangdong) Co., Ltd. (PTC)**

Building 1, No. 6, Tongxin Road, Dongcheng Street, Dongguan, Guangdong, China  
 Tel: 86-769-38808222 Fax: 86-769-38826111 [http:// www.ptc-testing.com](http://www.ptc-testing.com)



# Test Report

Report No.: PTC22110202201C-EN01

Issue Date: Dec. 30, 2022

Page10 of 20

76	64	N.D.	N.D.	N.D.	PASS
77	582	N.D.	61	N.D.	PASS
78	247	N.D.	67	N.D.	PASS
79	70	N.D.	N.D.	N.D.	PASS
83	68	N.D.	N.D.	N.D.	PASS
85+86+87	246	N.D.	90	60	PASS
88	57	N.D.	N.D.	N.D.	PASS
91	N.D.	N.D.	N.D.	PASS	PASS
92+95+96	N.D.	N.D.	N.D.	PASS	PASS
93	90	N.D.	140	N.D.	PASS
97+98	N.D.	N.D.	N.D.	PASS	PASS

- Note:**
1. mg/kg = milligram per kilogram (ppm).
  2. N.D. = Not Detected (<RL).
  3. RL=Reporting Limit.

## Test Material List

The following materials apply only to the samples submitted for phthalates testing.

Material No.	Description (Location)
1	Transparent plastic (lid)
2	Translucent silicone (sealing ring)
3	Off-white silicone (cushion)
6	Black plastic (shell)
8	Black rubber (cushion)
9	Transparent plastic with multi-color printing with viscose (logo)
11	Transparent plastic (vacuum gauge shell)
12	Red plastic (rotary switch)
13	Beige plastic (rotary switch)
15	Transparent plastic with blue printing(hose)
16	Transparent plastic with red printing(hose)
18	Black plastic (plug)
20	Blue PCB(PCB “SH43644” )
22	Red plastic (wire jacket,PCB “SH43644” )
23	Transparent plastic (casing,PCB “SH43644” )

This report is issued according to the general clauses in [www.ptc-testing.com](http://www.ptc-testing.com) by PTC. Responsibility, guarantee and law restriction are defined in the general service clauses. The report is only responsible for the submitted sample(s) except as otherwise noted. The report could not be copied without permission of the company.

**Precise Testing & Certification (Guangdong) Co., Ltd. (PTC)**

Building 1, No. 6, Tongxin Road, Dongcheng Street, Dongguan, Guangdong, China  
Tel: 86-769-38808222 Fax: 86-769-38826111 [http:// www.ptc-testing.com](http://www.ptc-testing.com)



# Test Report

Report No.: PTC22110202201C-EN01

Issue Date: Dec. 30, 2022

Page11 of 20

26	White plastic (terminal,PCB “SH43644” )
27	Black body (integrated circuit,PCB “SH43644” )
29	Black body (triode,PCB “SH43644” )
30	Black body (diode,PCB “SH43644” )
31	Black body with white printing (resistor,PCB “SH43644” )
32	Brown body (capacitor,PCB “SH43644” )
33	Black body (relay,PCB “SH43644” )
35	Dark gray body (inductor,PCB “SH43644” )
36	White body (LED,PCB “SH43644” )
38	Black rubber (capacitor,PCB “SH43644” )
39	Brown paper with liquid (film inside the capacitor,PCB “SH43644” )
40	Black plastic (switch button,PCB “SH43644” )
43	Black plastic (switch base,PCB “SH43644” )
44	Red plastic (LED,PCB “SH43644” )
45	Green plastic (LED,PCB “SH43644” )
46	White plastic with black coating (display,PCB “SH43644” )
47	White plastic (wire jacket)
48	Blue plastic (wire jacket)
49	Green plastic (wire jacket)
50	Yellow plastic (wire jacket)
51	Red plastic (wire jacket)
53	Blue plastic (casing)
54	Transparent soft plastic (casing)
55	Transparent plastic (wire jacket)
58	Off-white plastic (gasket)
60	Dark orange plastic (long sheet, transformer)
61	Bright orange plastic with black printing (transformer bracket)
62	Transparent plastic (bracket cover)
65	Black plastic (coil fixture)
66	Transparent plastic (coil protective film)
67	Yellow plastic with viscose (insulation tape)
68	Red-brown metal (transformer coil)
69	Black plastic (AC contactor body)
70	Blue plastic (coil fixture)
71	Light grey plastic with black printing (screw attachment)

This report is issued according to the general clauses in [www.ptc-testing.com](http://www.ptc-testing.com) by PTC. Responsibility, guarantee and law restriction are defined in the general service clauses. The report is only responsible for the submitted sample(s) except as otherwise noted. The report could not be copied without permission of the company.

**Precise Testing & Certification (Guangdong) Co., Ltd. (PTC)**

Building 1, No. 6, Tongxin Road, Dongcheng Street, Dongguan, Guangdong, China  
Tel: 86-769-38808222 Fax: 86-769-38826111 [http:// www.ptc-testing.com](http://www.ptc-testing.com)



# Test Report

Report No.: PTC22110202201C-EN01

Issue Date: Dec. 30, 2022

Page 12 of 20

74	White plastic (gasket)
75	White plastic with black/red printing (circuit breaker body)
76	Blue plastic with white printing (handle switch)
77	Purple plastic (wire jacket)
78	Yellow/green plastic (wire jacket)
79	Black plastic (port)
83	Blue plastic (oil can lid)
85	Black rubber (sealing ring)
86	Black plastic (cable jacket)
87	Brown plastic (wire jacket)
88	Black plastic (wire jacket)
91	Black plastic (cable jacket, data cable)
92	Black plastic (three-hole plug, data cable)
93	White plastic (inside plug, data cable)
95	Blue plastic (wire jacket, data cable)
96	Yellow/green plastic (wire jacket, data cable)
97	Brown plastic (wire jacket, data cable)
98	Black plastic (pin shell, data cable)

This report is issued according to the general clauses in [www.ptc-testing.com](http://www.ptc-testing.com) by PTC. Responsibility, guarantee and law restriction are defined in the general service clauses. The report is only responsible for the submitted sample(s) except as otherwise noted.  
The report could not be copied without permission of the company.

**Precise Testing & Certification (Guangdong) Co., Ltd. (PTC)**

Building 1, No. 6, Tongxin Road, Dongcheng Street, Dongguan, Guangdong, China

Tel: 86-769-38808222

Fax: 86-769-38826111

[http:// www.ptc-testing.com](http://www.ptc-testing.com)



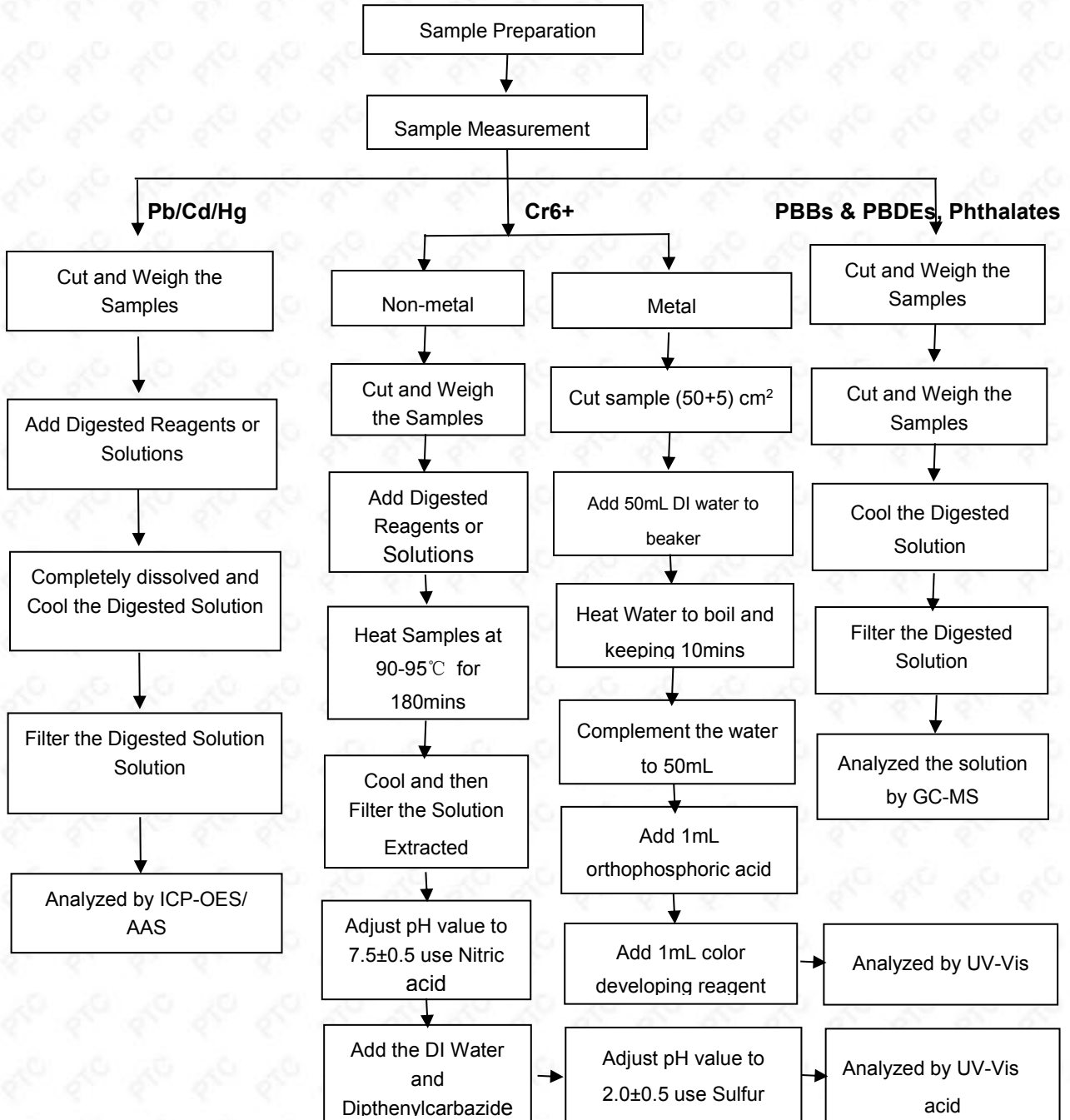
# Test Report

Report No.: PTC22110202201C-EN01

Issue Date: Dec. 30, 2022

Page13 of 20

## Pb/Cd/Hg/Cr6+/PBBs/PBDEs , Phthalates Testing Flow Chart



This report is issued according to the general clauses in [www.ptc-testing.com](http://www.ptc-testing.com) by PTC. Responsibility, guarantee and law restriction are defined in the general service clauses. The report is only responsible for the submitted sample(s) except as otherwise noted. The report could not be copied without permission of the company.

Precise Testing & Certification (Guangdong) Co., Ltd. (PTC)

Building 1, No. 6, Tongxin Road, Dongcheng Street, Dongguan, Guangdong, China

Tel: 86-769-38808222

Fax: 86-769-38826111

[http:// www.ptc-testing.com](http://www.ptc-testing.com)



# Test Report

Report No.: PTC22110202201C-EN01

Issue Date: Dec. 30, 2022

Page14 of 20

Photo(s) of Sample:



This report is issued according to the general clauses in [www.ptc-testing.com](http://www.ptc-testing.com) by PTC. Responsibility, guarantee and law restriction are defined in the general service clauses. The report is only responsible for the submitted sample(s) except as otherwise noted. The report could not be copied without permission of the company.

**Precise Testing & Certification (Guangdong) Co., Ltd. (PTC)**

Building 1, No. 6, Tongxin Road, Dongcheng Street, Dongguan, Guangdong, China

Tel: 86-769-38808222

Fax: 86-769-38826111

[http:// www.ptc-testing.com](http://www.ptc-testing.com)

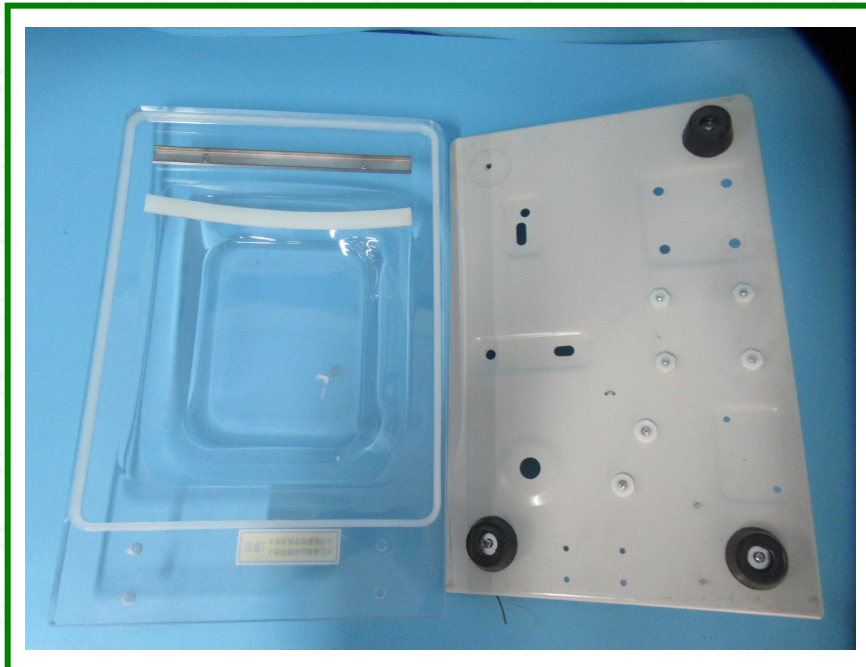


# Test Report

Report No.: PTC22110202201C-EN01

Issue Date: Dec. 30, 2022

Page15 of 20



This report is issued according to the general clauses in [www.ptc-testing.com](http://www.ptc-testing.com) by PTC. Responsibility, guarantee and law restriction are defined in the general service clauses. The report is only responsible for the submitted sample(s) except as otherwise noted. The report could not be copied without permission of the company.

**Precise Testing & Certification (Guangdong) Co., Ltd. (PTC)**

Building 1, No. 6, Tongxin Road, Dongcheng Street, Dongguan, Guangdong, China

Tel: 86-769-38808222

Fax: 86-769-38826111

[http:// www.ptc-testing.com](http://www.ptc-testing.com)

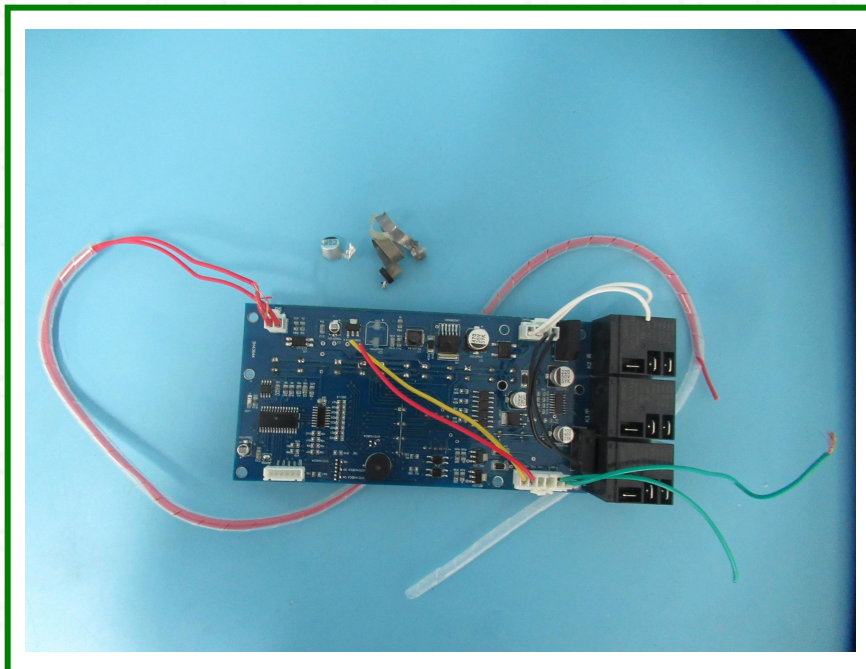


# Test Report

Report No.: PTC22110202201C-EN01

Issue Date: Dec. 30, 2022

Page16 of 20



This report is issued according to the general clauses in [www.ptc-testing.com](http://www.ptc-testing.com) by PTC. Responsibility, guarantee and law restriction are defined in the general service clauses. The report is only responsible for the submitted sample(s) except as otherwise noted. The report could not be copied without permission of the company.

**Precise Testing & Certification (Guangdong) Co., Ltd. (PTC)**

Building 1, No. 6, Tongxin Road, Dongcheng Street, Dongguan, Guangdong, China

Tel: 86-769-38808222

Fax: 86-769-38826111

[http:// www.ptc-testing.com](http://www.ptc-testing.com)



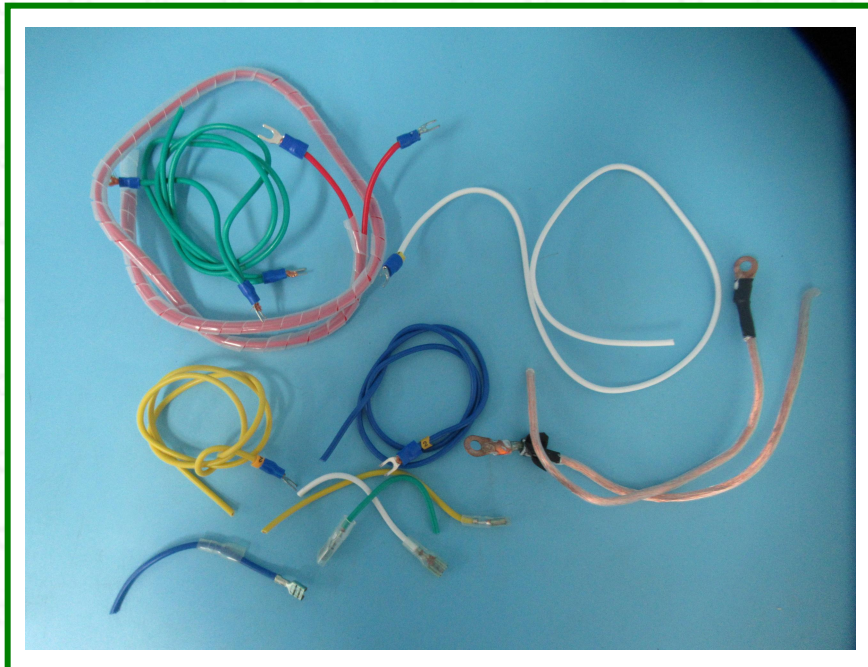
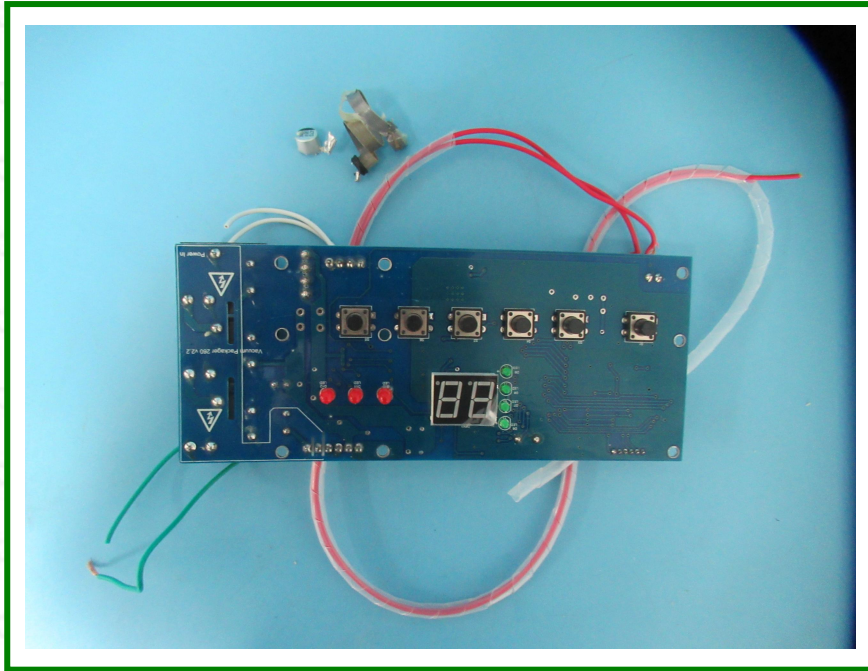


# Test Report

Report No.: PTC22110202201C-EN01

Issue Date: Dec. 30, 2022

Page17 of 20



This report is issued according to the general clauses in [www.ptc-testing.com](http://www.ptc-testing.com) by PTC. Responsibility, guarantee and law restriction are defined in the general service clauses. The report is only responsible for the submitted sample(s) except as otherwise noted. The report could not be copied without permission of the company.

**Precise Testing & Certification (Guangdong) Co., Ltd. (PTC)**

Building 1, No. 6, Tongxin Road, Dongcheng Street, Dongguan, Guangdong, China

Tel: 86-769-38808222

Fax: 86-769-38826111

[http:// www.ptc-testing.com](http://www.ptc-testing.com)

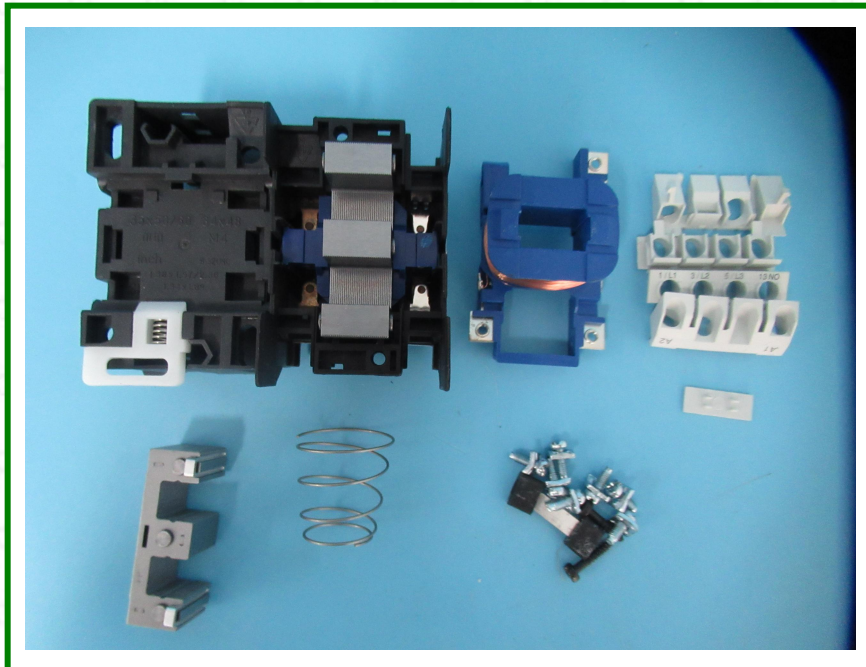
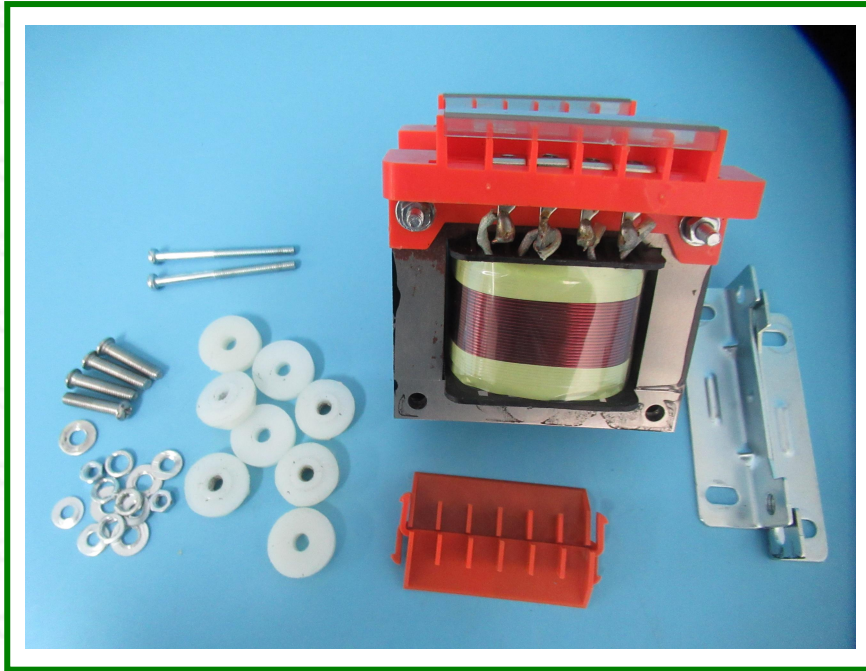


# Test Report

Report No.: PTC22110202201C-EN01

Issue Date: Dec. 30, 2022

Page18 of 20



This report is issued according to the general clauses in [www.ptc-testing.com](http://www.ptc-testing.com) by PTC. Responsibility, guarantee and law restriction are defined in the general service clauses. The report is only responsible for the submitted sample(s) except as otherwise noted. The report could not be copied without permission of the company.

**Precise Testing & Certification (Guangdong) Co., Ltd. (PTC)**

Building 1, No. 6, Tongxin Road, Dongcheng Street, Dongguan, Guangdong, China

Tel: 86-769-38808222

Fax: 86-769-38826111

[http:// www.ptc-testing.com](http://www.ptc-testing.com)

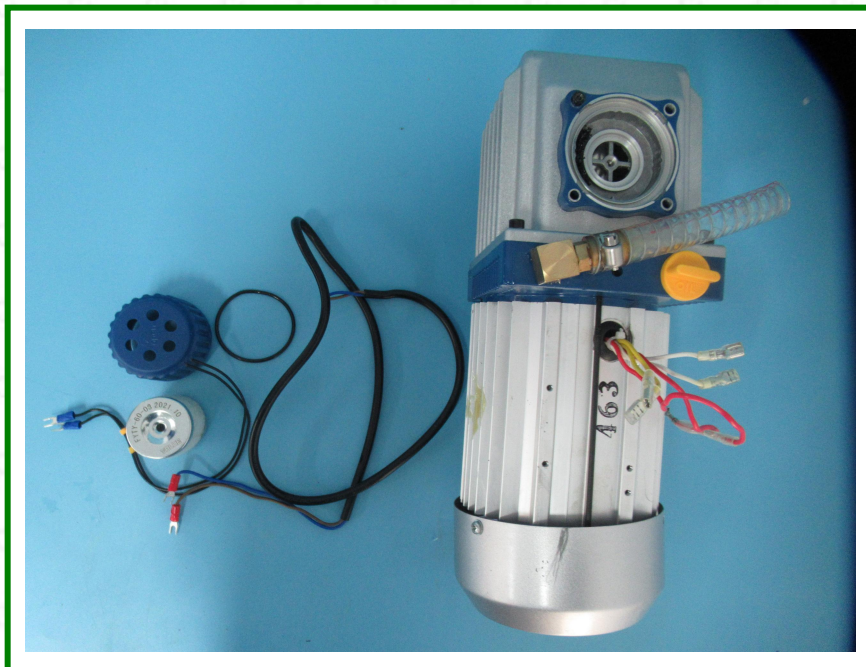
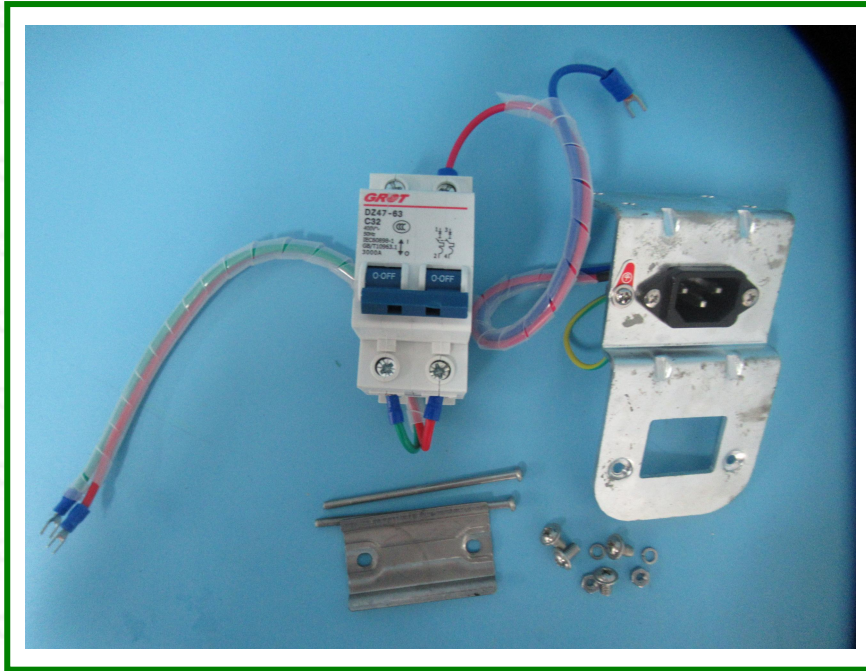


# Test Report

Report No.: PTC22110202201C-EN01

Issue Date: Dec. 30, 2022

Page19 of 20



This report is issued according to the general clauses in [www.ptc-testing.com](http://www.ptc-testing.com) by PTC. Responsibility, guarantee and law restriction are defined in the general service clauses. The report is only responsible for the submitted sample(s) except as otherwise noted. The report could not be copied without permission of the company.

**Precise Testing & Certification (Guangdong) Co., Ltd. (PTC)**

Building 1, No. 6, Tongxin Road, Dongcheng Street, Dongguan, Guangdong, China

Tel: 86-769-38808222

Fax: 86-769-38826111

[http:// www.ptc-testing.com](http://www.ptc-testing.com)



# Test Report

Report No.: PTC22110202201C-EN01

Issue Date: Dec. 30, 2022

Page20 of 20



\*\*\*End of Report\*\*\*

This report is issued according to the general clauses in [www.ptc-testing.com](http://www.ptc-testing.com) by PTC. Responsibility, guarantee and law restriction are defined in the general service clauses. The report is only responsible for the submitted sample(s) except as otherwise noted. The report could not be copied without permission of the company.

**Precise Testing & Certification (Guangdong) Co., Ltd. (PTC)**

Building 1, No. 6, Tongxin Road, Dongcheng Street, Dongguan, Guangdong, China

Tel: 86-769-38808222

Fax: 86-769-38826111

[http:// www.ptc-testing.com](http://www.ptc-testing.com)